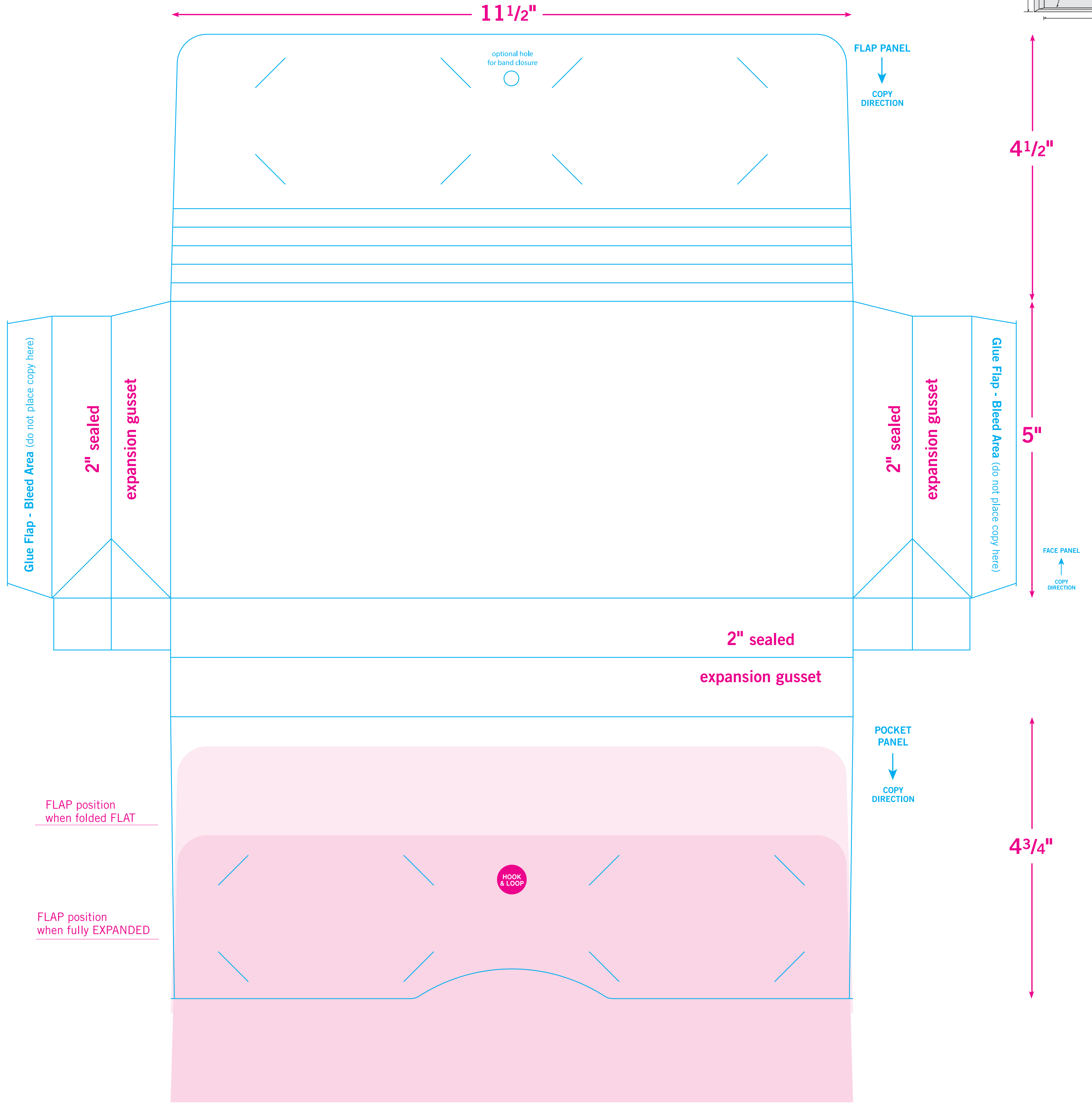
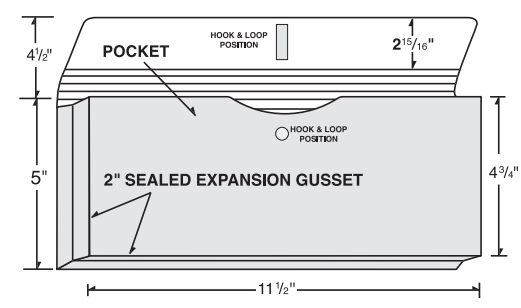


# 25-01



11 1/2"

4 1/2"

5"

4 3/4"

FLAP PANEL

↓  
COPY DIRECTION

FACE PANEL

↑  
COPY DIRECTION

POCKET PANEL

↓  
COPY DIRECTION

optional hole for band closure



2" sealed

expansion gusset

2" sealed

expansion gusset

2" sealed

expansion gusset

Glue Flap - Bleed Area (do not place copy here)

Glue Flap - Bleed Area (do not place copy here)

FLAP position when folded FLAT

FLAP position when fully EXPANDED

HOOK & LOOP