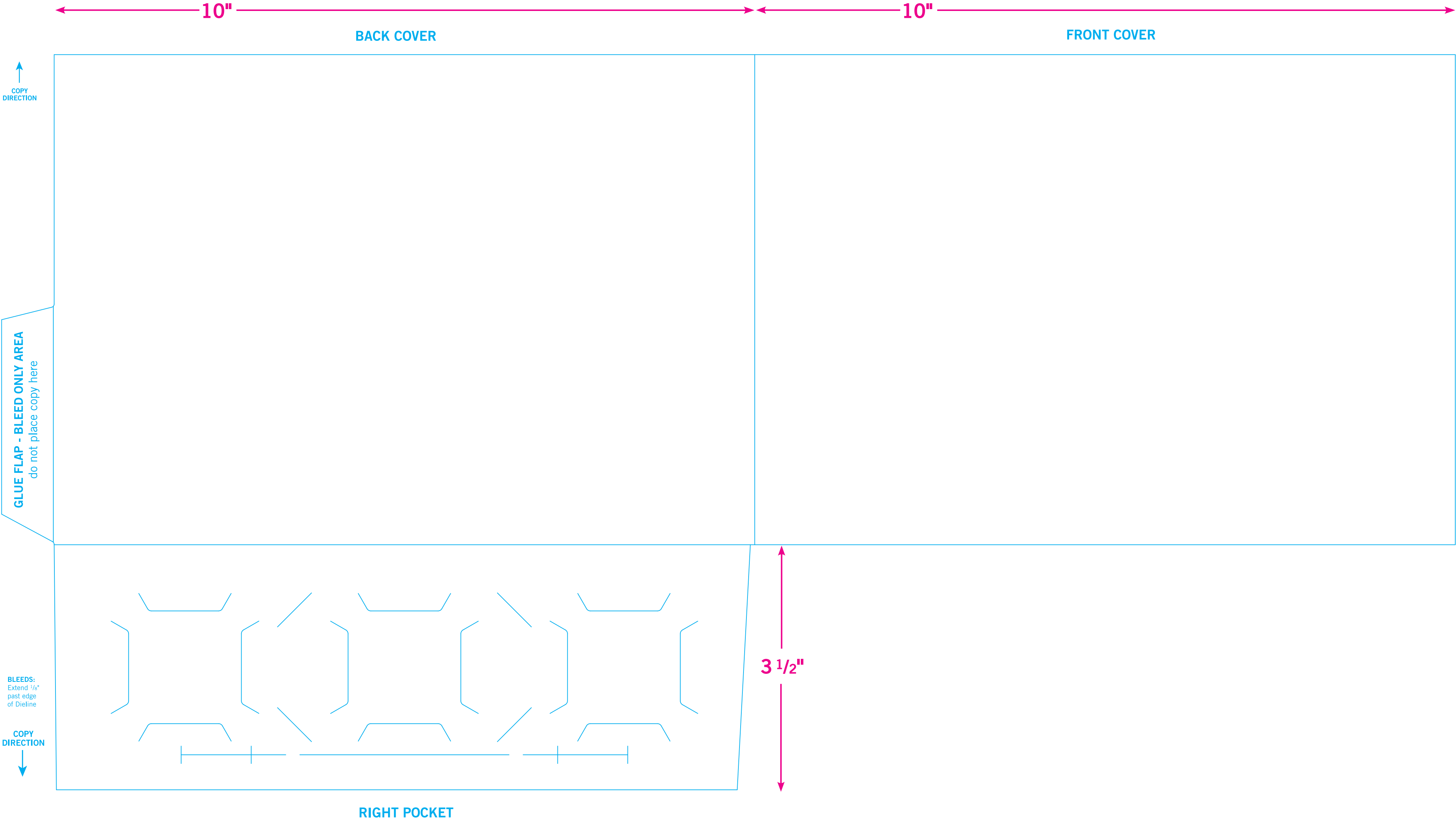
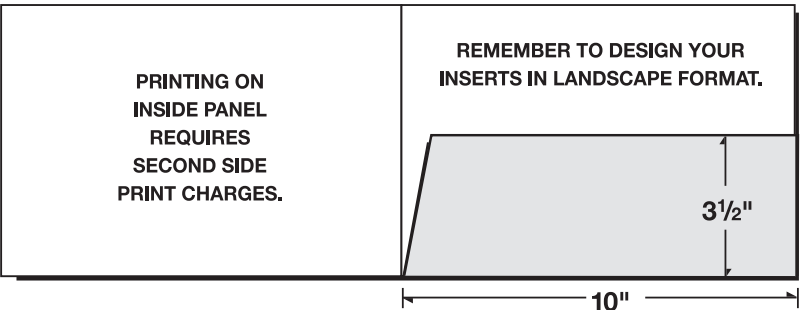


FRONT SIDE OF PRINTED SHEET



68-06



COPY DIRECTION ↑

BLEEDS:
Extend 1/8"
past edge
of Deline

SECOND SIDE OF PRINTED SHEET (RSP)

INSIDE FRONT COVER

INSIDE BACK COVER

**Printing on the Inside Panels
requires second side
print charges.**

**Printing on the Inside Panels
requires second side
print charges.**

**Blue shaded areas will
be covered when folded and glued.
Do not place copy here.
Bleed only area.**


COPY
DIRECTION

BLEEDS:
Extend 1/8"
past edge
of Dieline